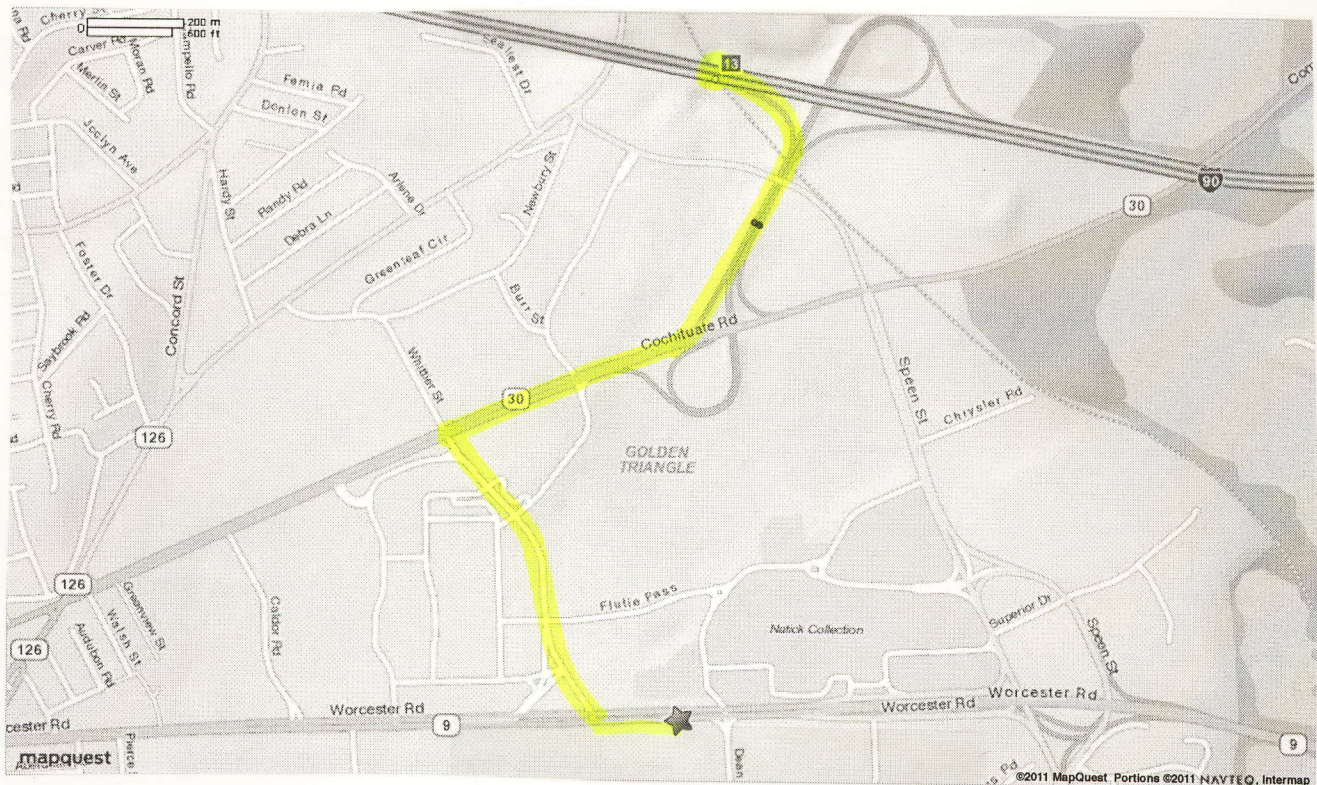


From Mass. Pike (I-90) Eastbound
to Crowne Plaza
(1360 Worcester Rd., Natick MA)



Mass. Pike (I-90) to Exit 13 (Natick/Rt. 30)

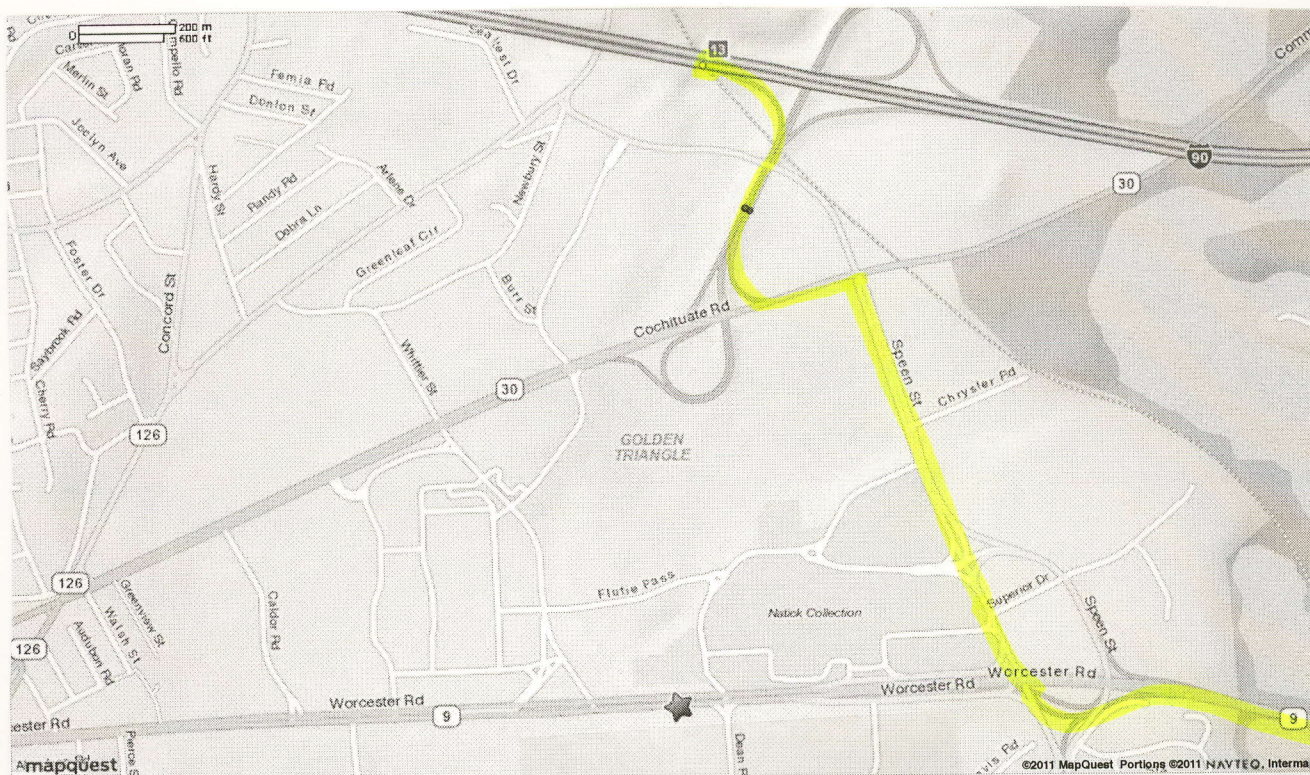
Get on Rt. 30 WEST from Pike Exit

Go LEFT on Shopper's World Rd. (note on map the street is labeled "Whittier St", but the name changes when the road crosses Rt. 30)

Get on Route 9 EAST (toward Boston)

The Crowne Plaza will be on your RIGHT.

From Mass. Pike (I-90) Eastbound
directly to Wellesley campus



go to
page 2

Mass. Pike (I-90) to Exit 13 (Natick/Rt. 30)

Get on Rt. 30 EAST from Pike Exit

Go RIGHT on Speen St. Keep left on Speen St. and get on Rt. 9 EAST
(toward Boston).

You'll be on Rt. 9 for about 2½ miles, then turn RIGHT on Oak Street (a
major intersection with traffic light and big interchange).

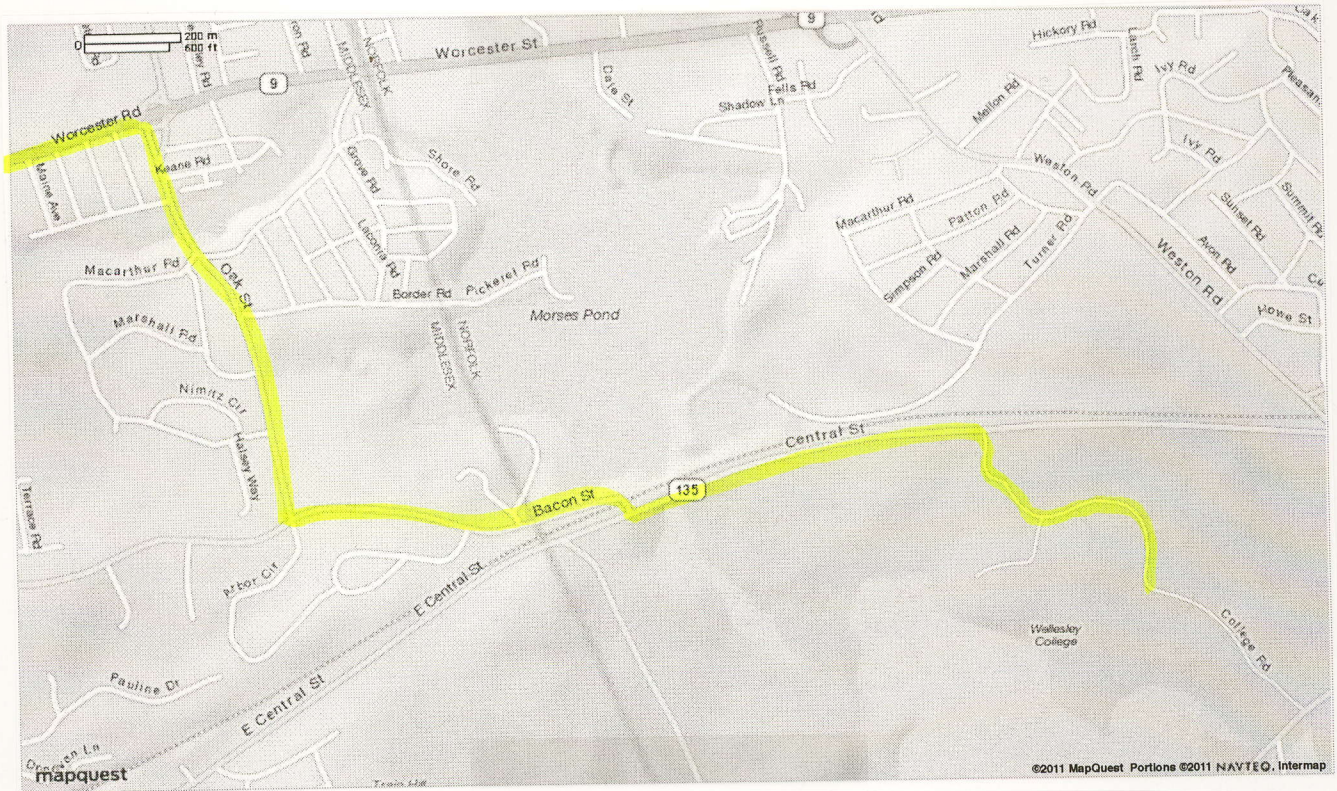
Then LEFT on Bacon St. (which is the first traffic light (other than a fire
station light)) you'll come to.

Bacon St. ends at Rt. 135 (after making a sharp right turn to cross under
a bridge). Go LEFT on Rt. 135. The next stoplight will be the entrance to
Wellesley. Turn RIGHT to enter campus.

→ go to
page 2

Route 9 E to Wellesley Campus

"page 2"



"page 1"

Mass. Pike (I-90) to Exit 13 (Natick/Rt. 30)

Get on Rt. 30 EAST from Pike Exit

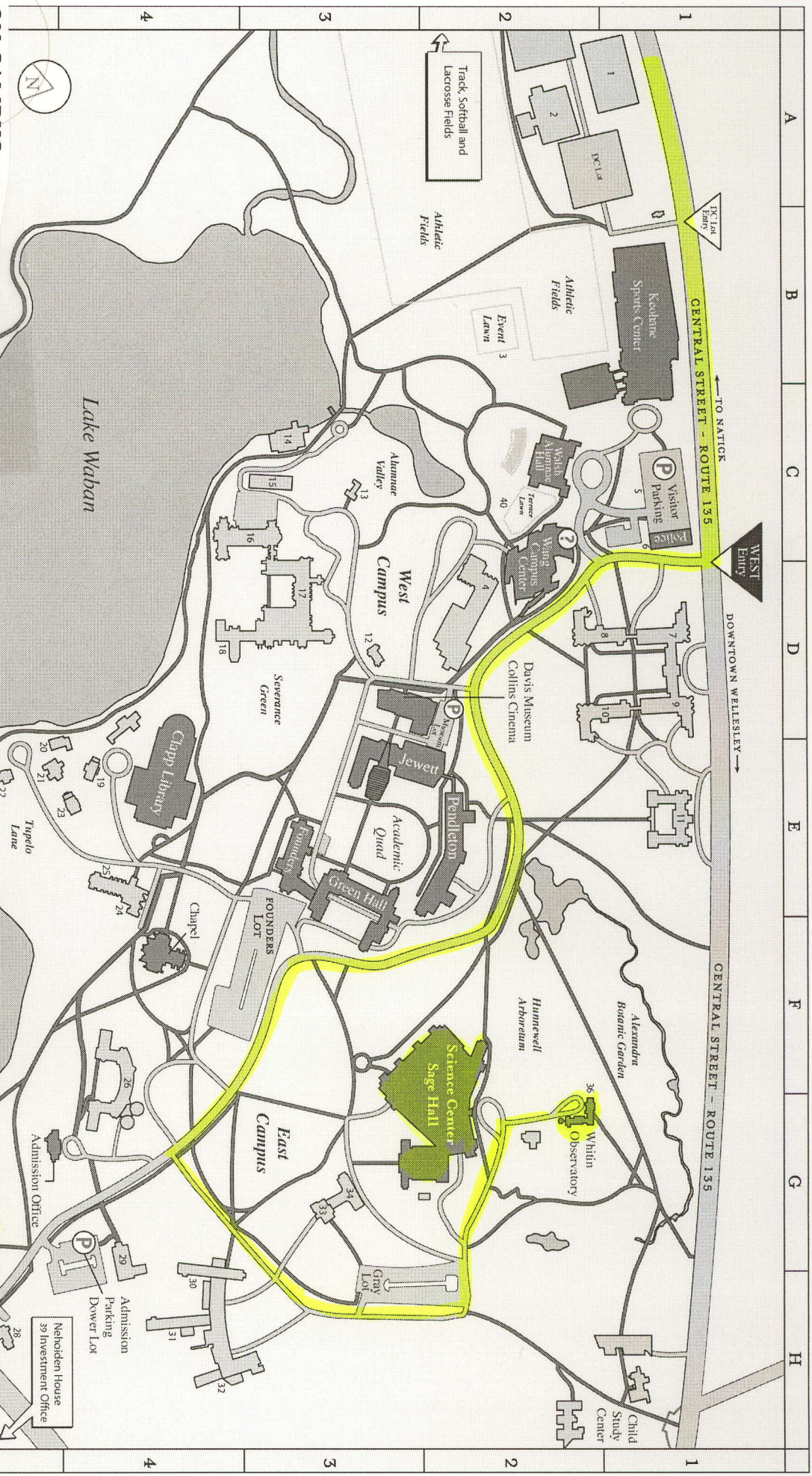
Go RIGHT on Speen St. Keep left on Speen St. and get on Rt. 9 EAST (toward Boston).

this page

You'll be on Rt. 9 for about 2½ miles, then turn RIGHT on Oak Street (a major intersection with traffic light and big interchange).

Then LEFT on Bacon St. (which is the first traffic light (other than a fire station light)) you'll come to.

Bacon St. ends at Rt. 135 (after making a sharp right turn to cross under a bridge). Go LEFT on Rt. 135. The next stoplight will be the entrance to Wellesley. Turn RIGHT to enter campus.



ON CAMPUS

If you're coming from the Pike (Eastbound) or the hotel, you'll enter campus from the West entrance.

The continuous yellow line directs you to the Observatory (opening reception) and Science Center (talks). There will be parking on the left of the road between "Gray Lot" and the Science Center.

The College Club (also highlighted in yellow) is the site of the dinner.

